

ServPatrol Installation Guide Windows

Document Version: 1.3

Table of Contents:

Windows.....	1
Prerequisites	3
Server Installation.....	3
ServPatrol Server Start Menu	8
Uninstalling ServPatrol Server	9
ServPatrol Client Installation.....	11
ServPatrol Client Start menu	12
Uninstalling Client.....	12
Technical Information	13

Prerequisites

ServPatrol Server and Client require a Java Virtual Machine installed. The version of Java Virtual Machine must be not less than 1.5 for both Windows and Linux versions.

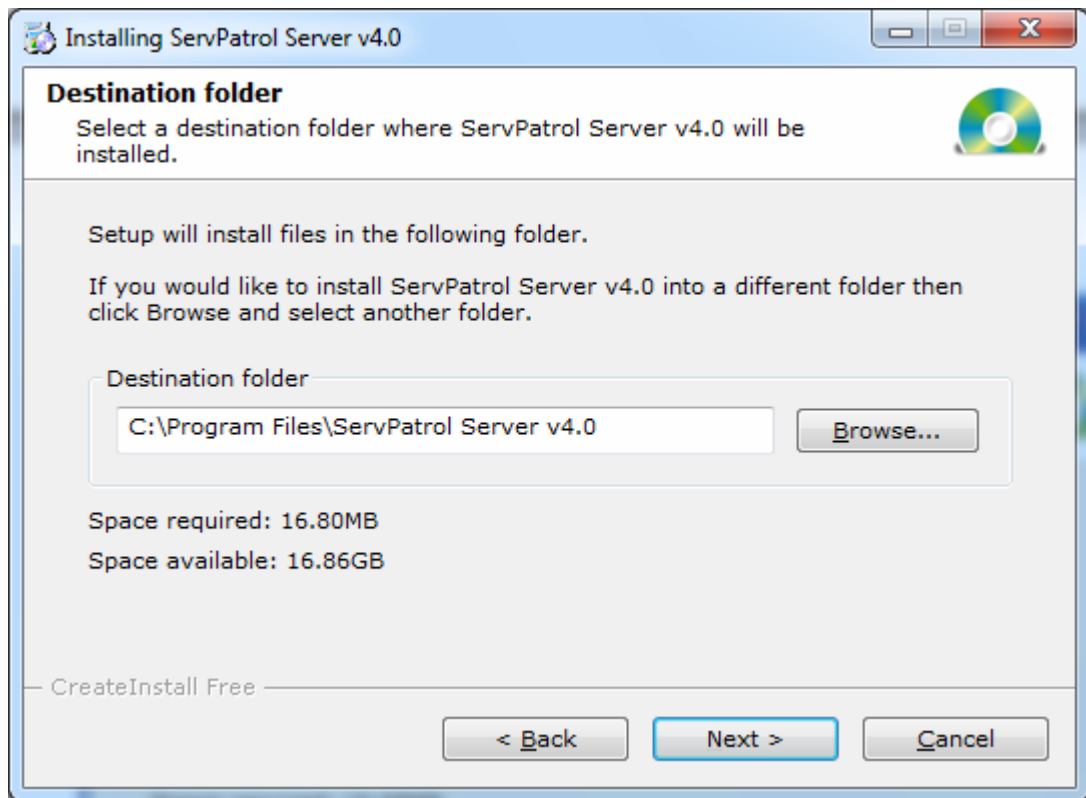
Server Installation

To install the ServPatrol Server v4.0 application, follow these instructions:

1. Run the ServPatrol Server v4.0 setup program. Press **Next**.



2. Press **Browse** and choose the required folder, where to install the Server in the appearing dialog box.

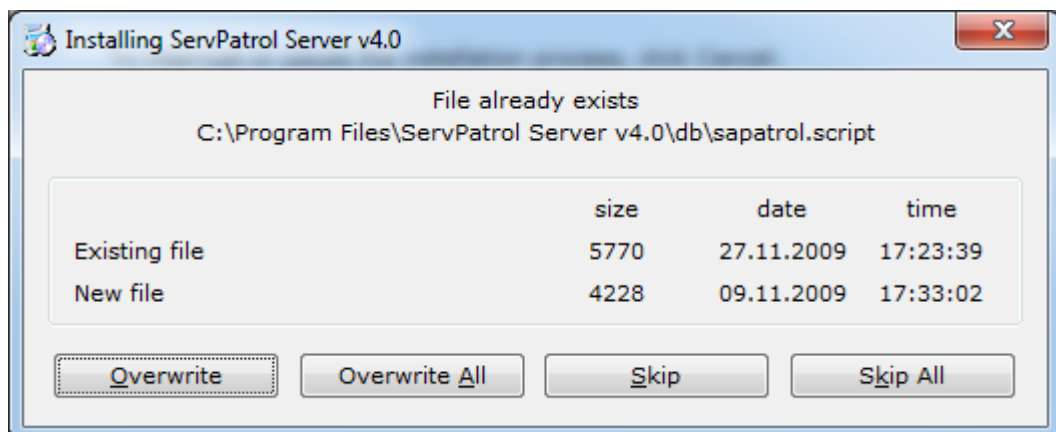


Press **Next**.

If the database already exists on your server, the installer will propose you to choose one of the following actions:

- Overwrite
- Overwrite All
- Skip
- Skip All

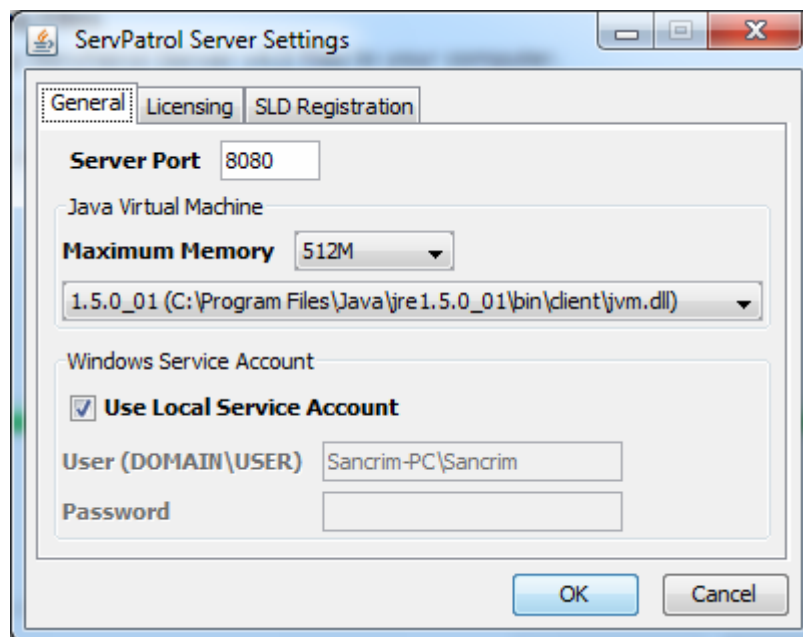
To delete the existing database and create a new one, press **Overwrite** or **Overwrite All**. To use the existing database and go to the next step, press **Skip** or **Skip All**. **Overwrite All** and **Skip All** refers to all files, that need to be overwritten. You should always choose **Overwrite All**, if you wish to clear your previous database and **Skip All**, if you wish to use your previous database.



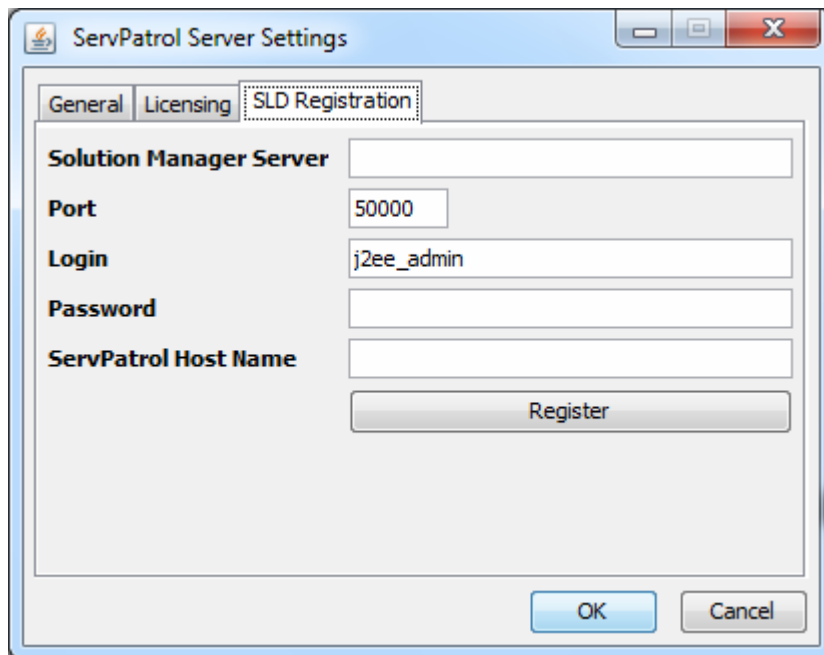
3. Specify the required parameters on the **General** and **Licensing** tabs.

The **General** tab contains the following information:

- **Server Port.** Specify the port, which will be used for the ServPatrol Server to listen to the client connections.
- **Maximum JVM Memory.** Specify this parameter in case there are many units to monitor. Suggested minimum values are:
 - 64 MB to monitor < 20 units*
 - 128 MB to monitor < 100 units*
 - 256 MB to monitor < 200 units*
 - 512 MB to monitor > 200 units*
- **Path to Java Virtual Machine.** Specify the path to the Java Virtual Machine, which will be used to run the ServPatrol Server.
- **Windows Service Account.** To specify this parameter is important to monitor Log shipping. To use the Microsoft SQL Server SSPI authorization mechanism, create a new system account, which will have rights to connect to Microsoft SQL Servers and execute statements. Check the box and type in the required values in the **User** and **Password** fields.

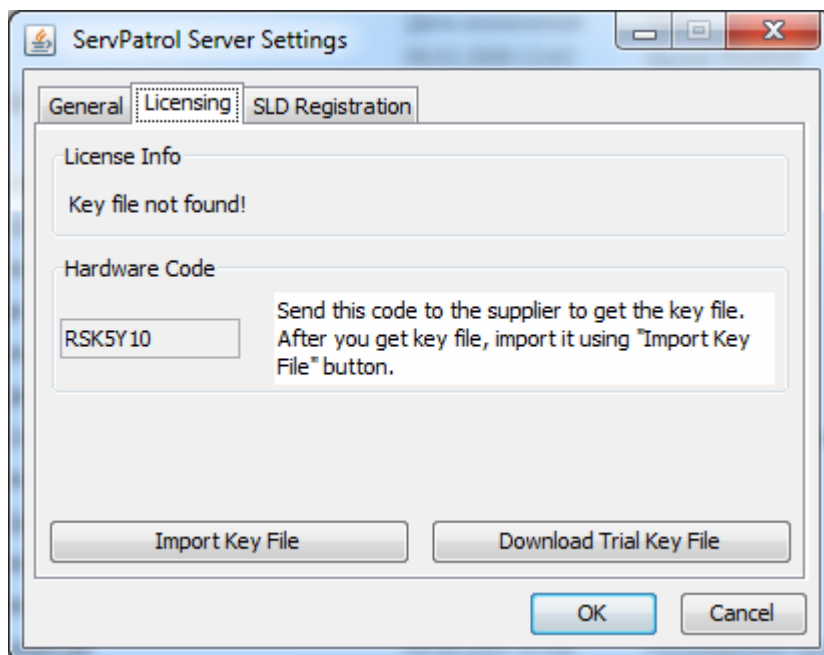


The **SLD Registration** tab allows you to register the ServPatrol application in your System Landscape Directory in Solution Manager.

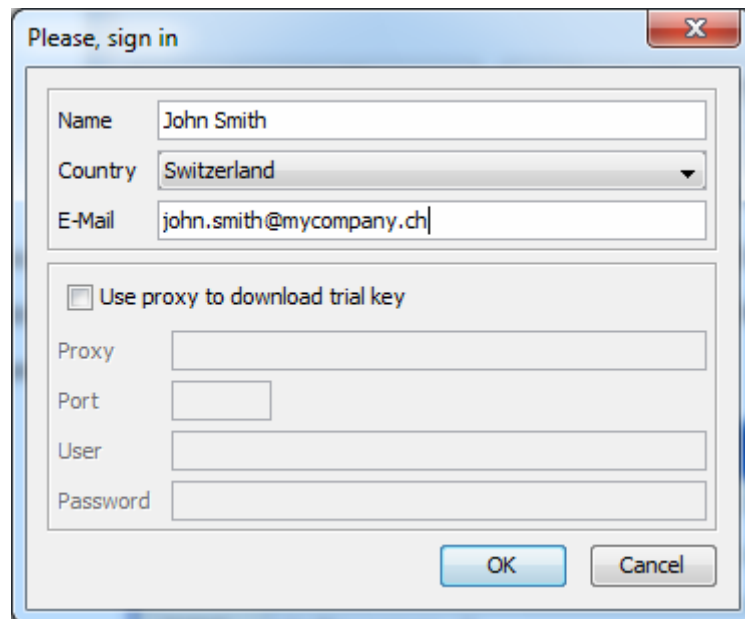


You should enter the Solution Manager Server IP address or host name, specify the port (port is calculated using this scheme: 5<sysnum>00, where the <sysnum> is the 2-digit system number). Correct the login if necessary and specify the password. Also you need to specify the ServPatrol Server host name, where the ServPatrol Server is installed. Then you should press **Register** button. If the registration is successful, then the dialog with the OK message will appear.

The **Licensing** tab should contain a hardware code, which must be sent to the software distributor to get the key file. After receiving the key file, import it by pressing **Import Key File**. Only after that, the ServPatrol Service can be started.



Also you can download trial key. With a trial key you can use all the features of the ServPatrol Server, for 30 days. Press **Download Trial Key File** button, then the dialog will appear:

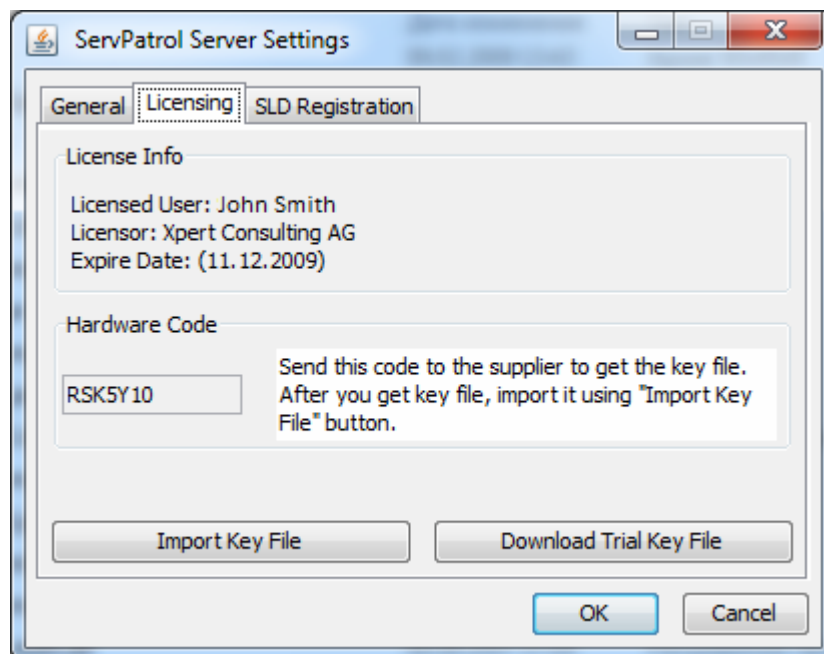


The dialog box titled "Please, sign in" contains the following fields and options:

- Name: John Smith
- Country: Switzerland
- E-Mail: john.smith@mycompany.ch
- Use proxy to download trial key
- Proxy: [empty field]
- Port: [empty field]
- User: [empty field]
- Password: [empty field]

Buttons: OK, Cancel

You should write your name, country and E-Mail address into the corresponding fields of the dialog. You should specify proxy settings, if necessary. Press **OK** to start the trial key download. You will return to the previous dialog. If the key was successfully downloaded (and imported), you will see the license information:



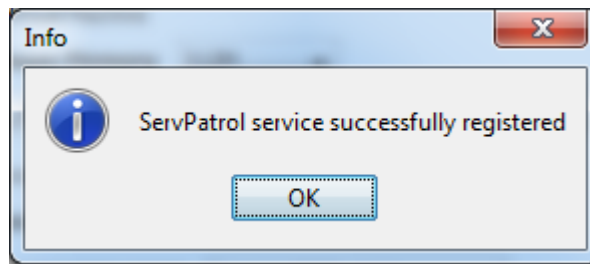
The "ServPatrol Server Settings" dialog box has three tabs: General, Licensing, and SLD Registration. The "Licensing" tab is active and displays the following information:

- License Info**
 - Licensed User: John Smith
 - Licensor: Xpert Consulting AG
 - Expire Date: (11.12.2009)
- Hardware Code**
 - RSK5Y10
 - Send this code to the supplier to get the key file. After you get key file, import it using "Import Key File" button.

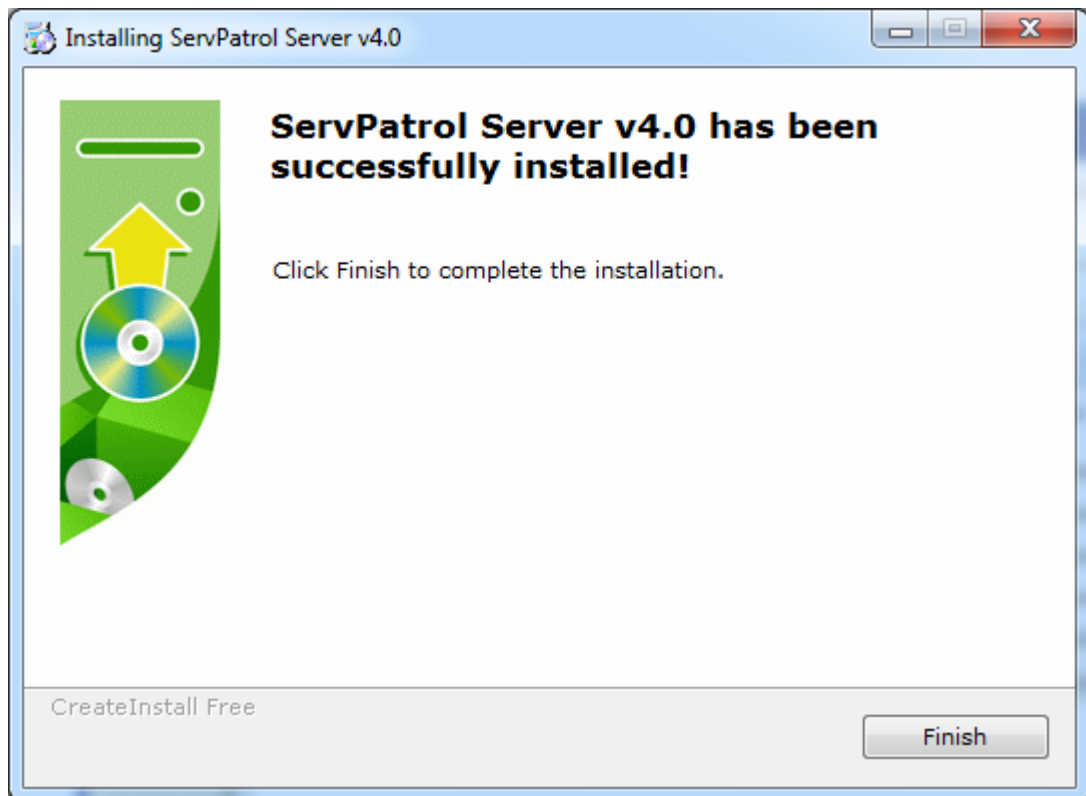
Buttons: Import Key File, Download Trial Key File, OK, Cancel

Press **OK**.

The system will inform you about successful ServPatrol service registration:



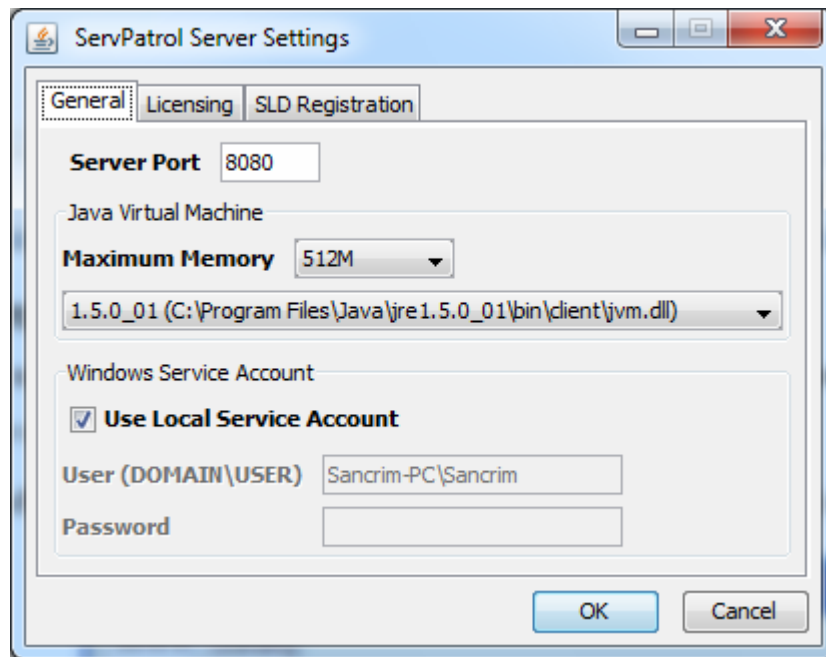
4. Press **Finish** to complete the installation.



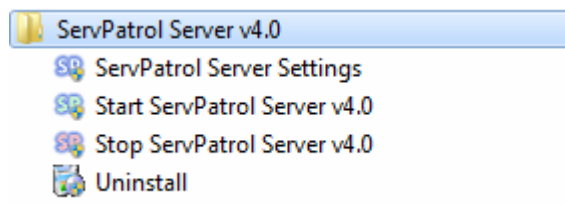
ServPatrol Server Start Menu

In the Start menu, the user can select any shortcut of the **ServPatrol Server v4.0** item to execute one of the following actions:

- **ServPatrol Server Settings** shortcut is used to specify the required settings.



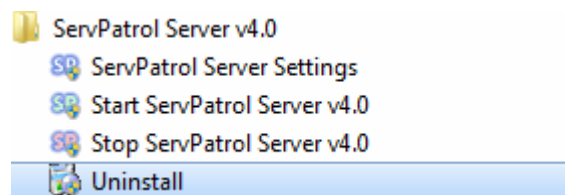
- **Start ServPatrol Server v4.0** shortcut is used to run the ServPatrol Server service.
- **Stop ServPatrol Server v4.0** shortcut is used to stop the ServPatrol Server service.
- **Uninstall** shortcut triggers uninstalling the ServPatrol Server.



Uninstalling ServPatrol Server

To uninstall the **ServPatrol Server v4.0** application, follow these instructions:

1. Select the appropriate item in the Start menu.

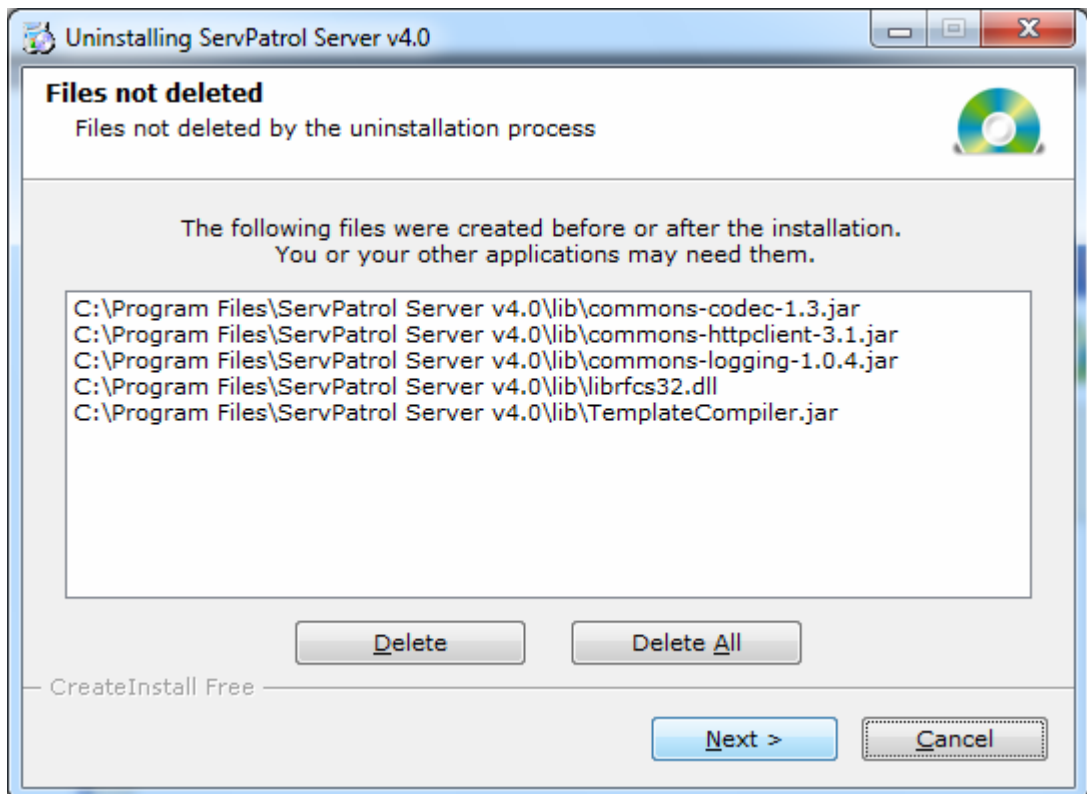


The system will display the **Uninstalling ServPatrol Server v4.0** dialog box.



Press **Next**.

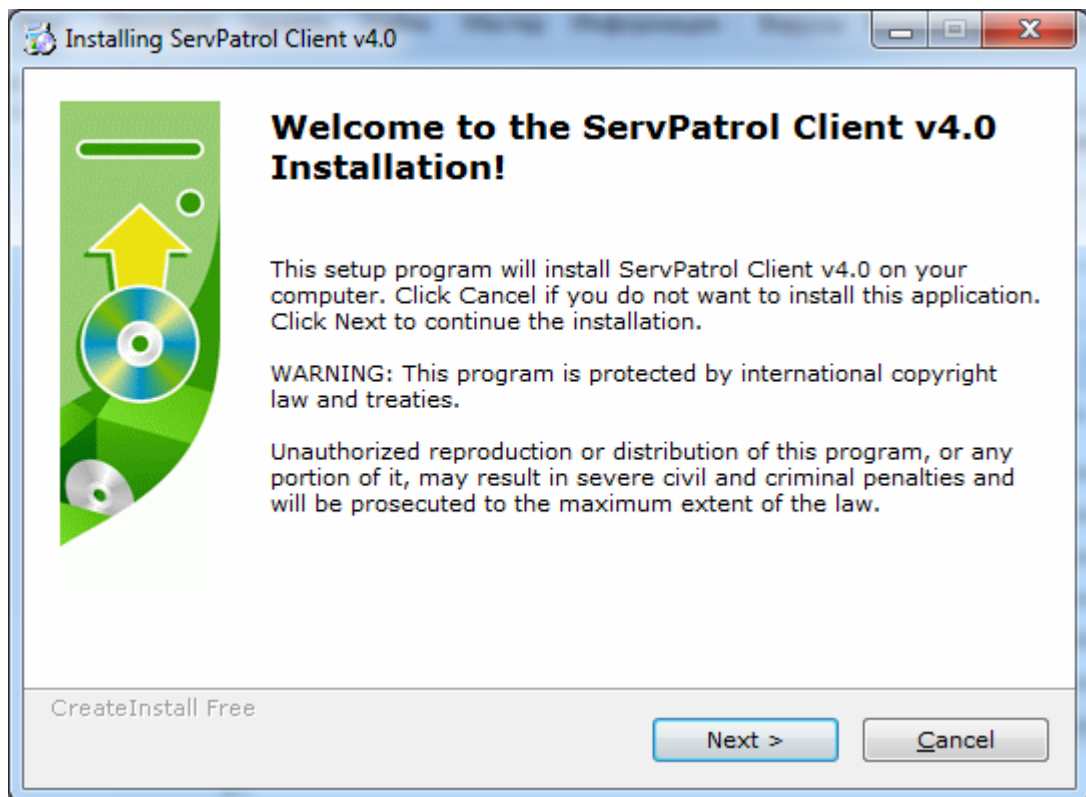
2. On the next step, the system will propose you either to press **Delete All** to delete all files made by the ServPatrol Server, or press **Next** to keep them for future use. To delete any selected file, select the required one and press **Delete**.



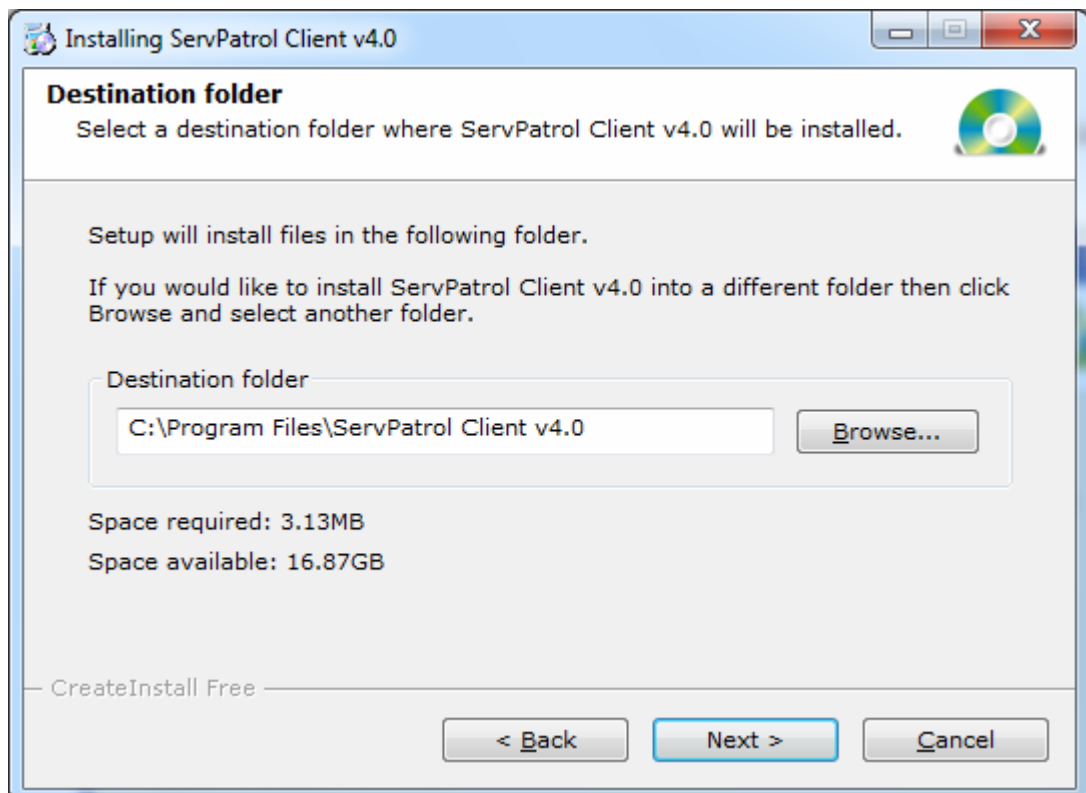
ServPatrol Client Installation

To install the ServPatrol Client v4.0 application, follow these instructions:

1. Run the ServPatrol Client v4.0 installation program. Press **Next**.

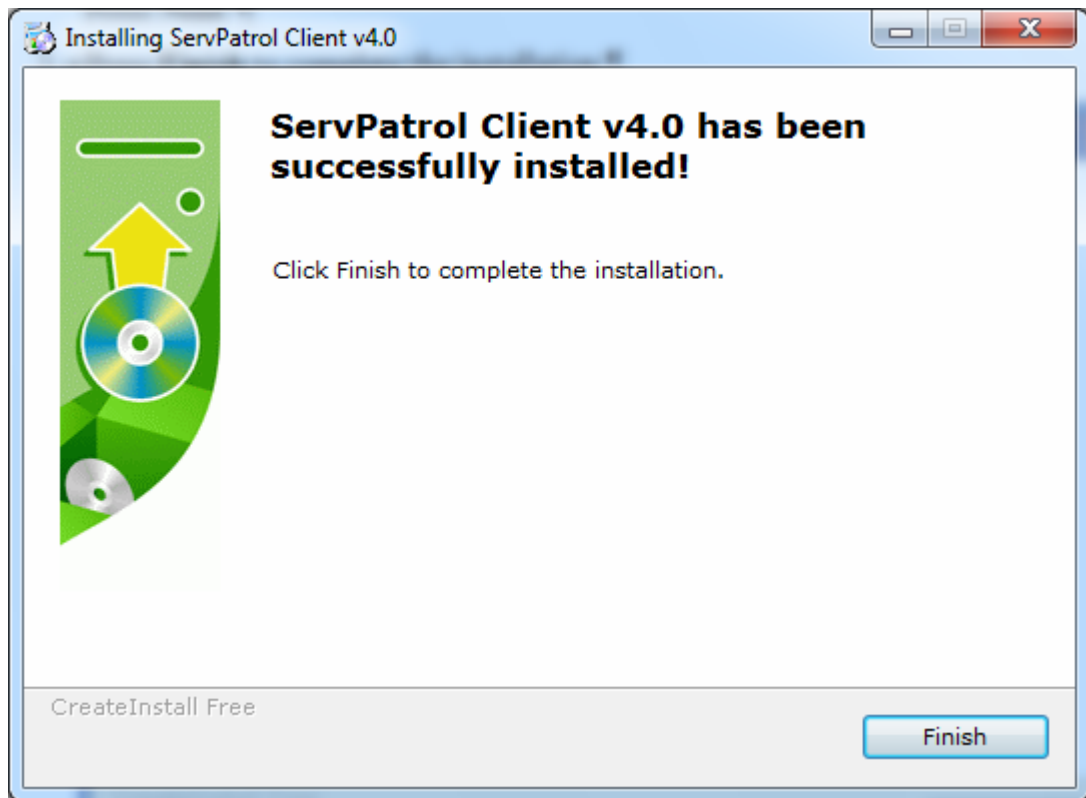


2. Press **Browse** and choose the required folder, where to install the application in the appearing dialog box.



Press **Next**.

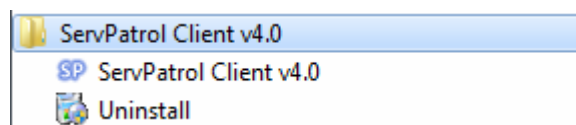
3. Press **Finish** to complete the installation.



ServPatrol Client Start menu

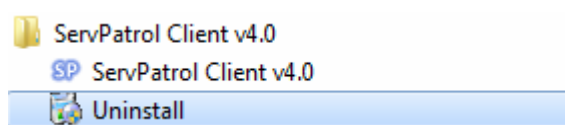
In the Start menu, the user can select any shortcut of the **ServPatrol Client v4.0** item to execute one of the following actions:

- **ServPatrol Client v4.0** shortcut is used to run the ServPatrol Client application.
- **Uninstall** shortcut is used to uninstall the application.



Uninstalling Client

To uninstall the **ServPatrol Client v4.0** application, select the appropriate item in the Start menu.



The system will display the **Uninstalling ServPatrol Client v4.0** dialog box. Press **Next**.



Technical Information

ServPatrol Server uses the following paths:

Path	Description
C:\Program Files\ServPatrol Server v.4.0	The default installation path
<Install directory>\lib	In this folder there are all necessary libraries, key file, server.ini file, which contains the port and the maximum amount of memory allowed for the JVM.
<Install directory>\log	In this folder there is a file ServPatrol.log, which contains ServPatrol Server work and errors log.
<Install directory>\DailyBackup	In this folder there is a database backup for the last 7 days. The database is backing up every hour.
<Install directory>\AuditReports	In this folder the generated audit reports stored in html format.

ServPatrol Client uses the following paths:

Path	Description
C:\Program Files\ServPatrol Client v.4.0	The default installation path
<Applications Directory>\ServPatrol\	In this directory there is a file settings.dat, which contains all the client settings, specific to the current user (e.g. landscapes, units sorting order, favorite transactions, etc.)
<Install directory>\print	In this directory the unit lists are generated