

# **ServPatrol Installation Guide Linux**

Document Version: 1.3

## Prerequisites

ServPatrol Server and Client require a Java Virtual Machine installed. The version of Java Virtual Machine must be not less than 1.5 for both Windows and Linux versions.

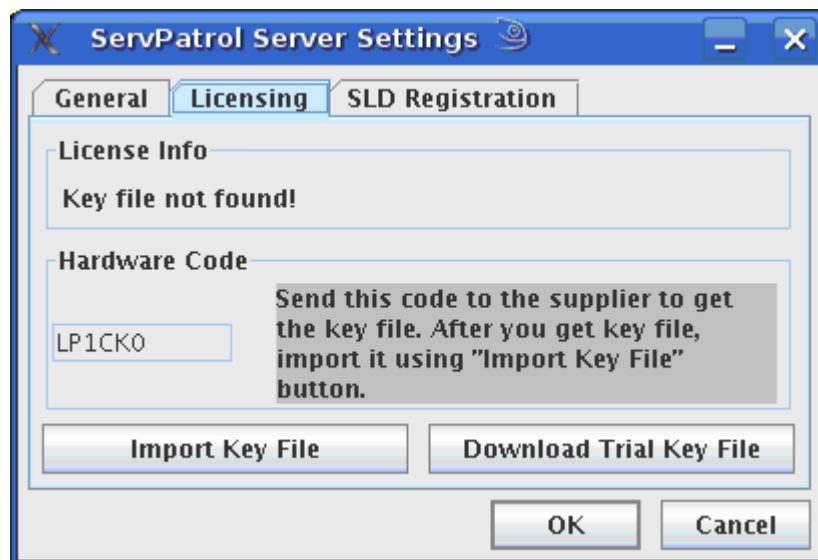
## Linux Installation

### Client Installation

1. Unzip ServPatrolClient.zip file to the folder, where the ServPatrol Client files will be stored (e.g. /home/<user name>/ServPatrolClient)
2. Set execution rights to file ServPatrol.sh
3. Run ServPatrol.sh to start the ServPatrol Client.

### Server Installation

1. Unzip ServPatrolServer.zip to the folder, where the ServPatrol Server files will be stored (e.g. /home/<user name>/ServPatrolServer)
2. Set the execution rights to files settings.sh, stop.sh and start.sh
1. Run settings.sh to get hardware code on the **Licensing** tab. Get the hardware key from ServPatrol software distributor and use settings.sh dialog to import the license key. (or just copy ServPatrol.key to the folder ServPatrolServer/lib)

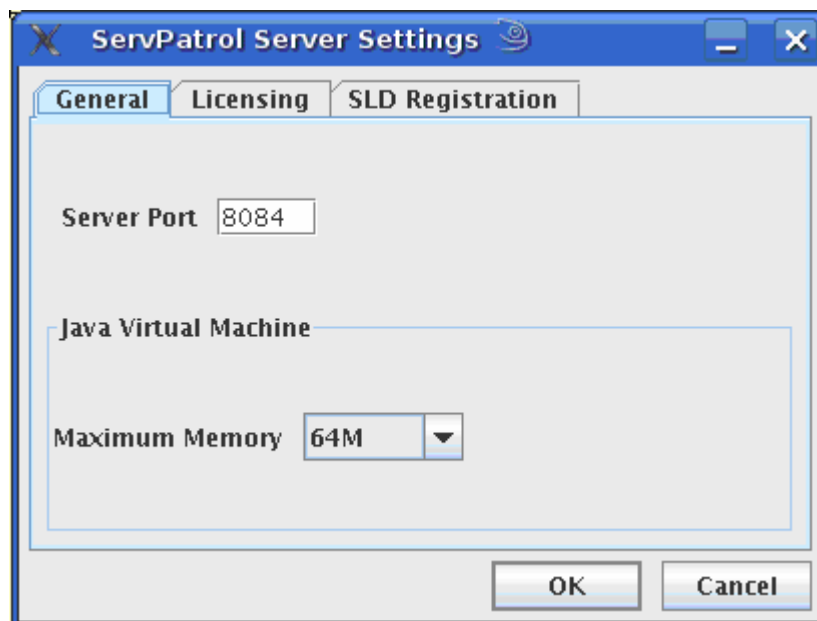


2. You can download a trial key file and use all the features of the ServPatrol Server, for 30 days since key download. Press **Download Trial Key File** button, then the dialog will appear:



You should enter your name, country and E-Mail address into the corresponding fields of the dialog. You should specify proxy settings, if necessary. Press **OK** to start the trial key download. You will return to the previous dialog.

3. Setup the server port and JVM Memory size at the **General** tab.



The **General** tab contains the following information:

- **Server Port.** Specify the port, which will be used for the ServPatrol Server to listen to client connections.
- **Maximum JVM Memory.** Specify this parameter in case there are many units to monitor. Suggested minimum values are:

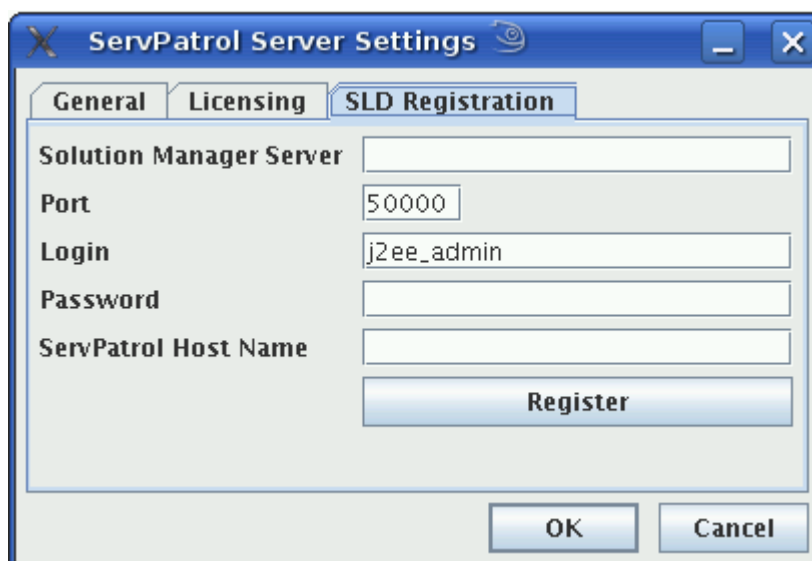
**64 MB** to monitor < 20 units

**128 MB** to monitor < 100 units

**256 MB** to monitor < 200 units

**512 MB** to monitor > 200 units

The **SLD Registration** tab allows you to register the ServPatrol application in your System Landscape Directory in Solution Manager.



You should enter the Solution Manager Server IP address or host name, specify the port (port is calculated using this scheme: 5<sysnum>00, where the <sysnum> is the 2-digit system number). Correct the login if necessary and specify the password. Also you need to specify the ServPatrol Server host name, where the ServPatrol Server is installed. Then you should press **Register** button. If the registration is successful, then the dialog with the OK message will appear.

4. Run start.sh to start the ServPatrol Server. To stop ServPatrol Server run stop.sh.

## Technical Information

ServPatrol Server uses the following paths:

Path	Description
<Install directory>\lib	In this folder there are all necessary libraries, key file, server.ini file, which contains the port and the maximum amount of memory allowed for the JVM.
<Install directory>\log	In this folder there is a file ServPatrol.log, which contains ServPatrol Server work and errors log.
<Install directory>\DailyBackup	In this folder there is a database backup for the last 7 days. The database is backing up every hour.
<Install directory>\AuditReports	In this folder the generated audit reports stored in html format.

ServPatrol Client uses the following paths:

Path	Description
<Applications Directory>\ServPatrol\	In this directory there is a file settings.dat, which contains all the client settings, specific to the current user (e.g. landscapes, units sorting order, favorite transactions, etc.)
<Install directory>\print	In this directory the unit lists are generated